

佛山市顺德区铭海家具有限公司
Foshan Mingle Furniture Co.,Ltd

WeChat:+86 133 92249161

WhatsApp:+86 133 92249161

Email: Sales02@gdmingle.com

<https://fsmingle.en.alibaba.com>

Website: <https://gdmingle.com>

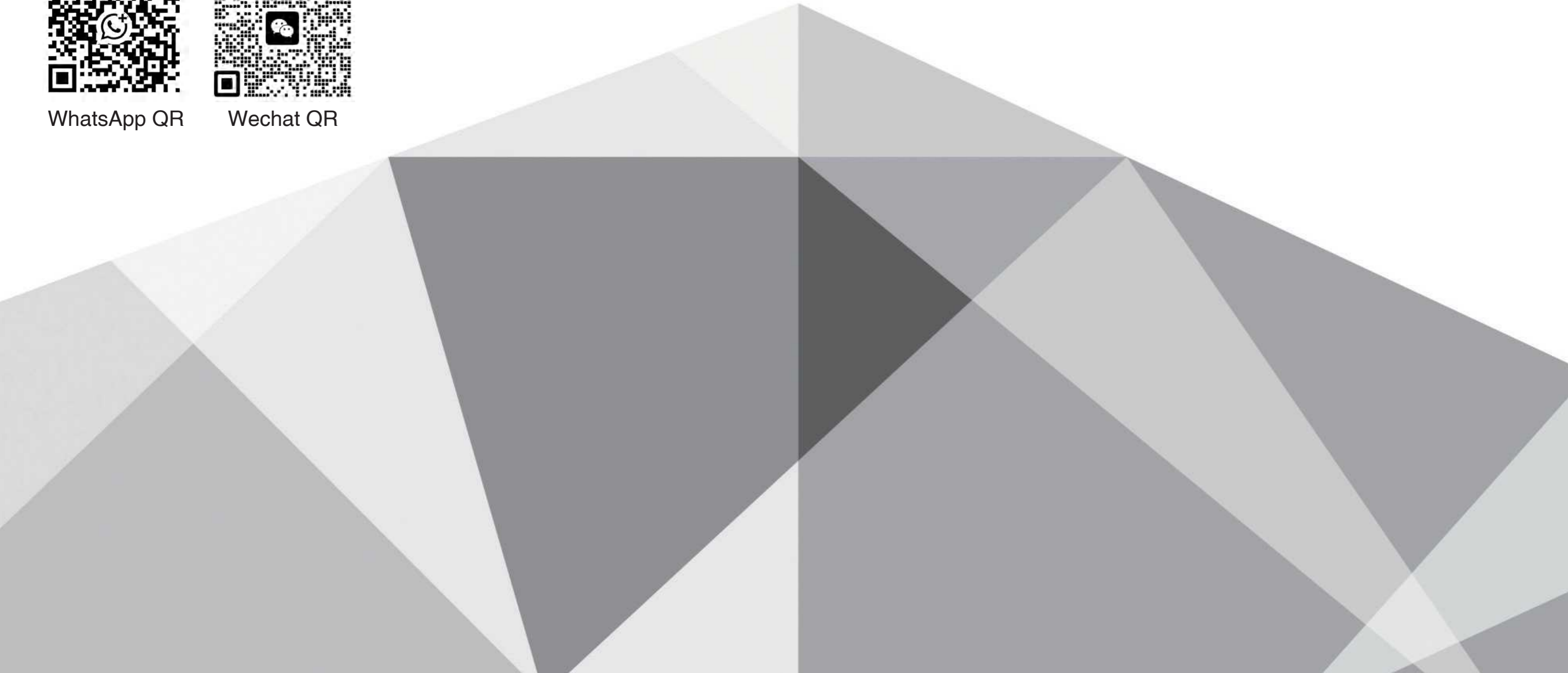
Mingle®



WhatsApp QR



Wechat QR





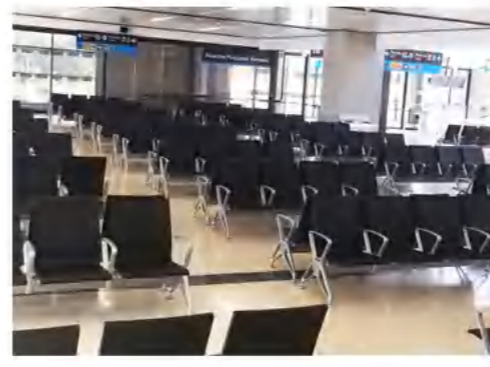
Navi Mumbai International Airport (Model No.:ITA-01)



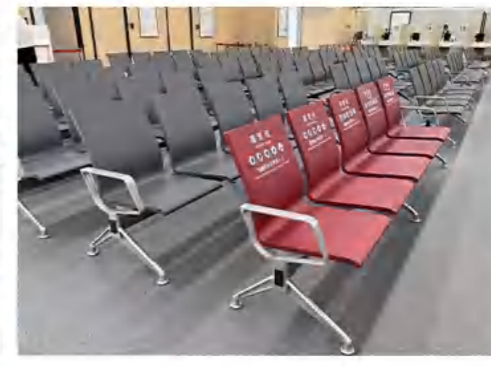
Jingzhou Airport (Model No.:B4)



Navi Mumbai International Airport (Model No.:ITA-01)



Jakarta International Airport Indonesia (Model No.:B4)



China Travel Service Hong Kong (Model No.:B430)



Enze Hospital in Taizhou (Model No.:B4)



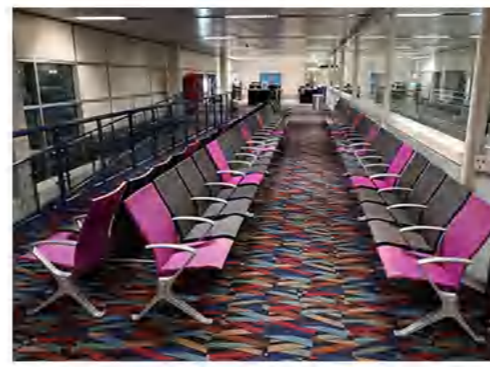
Hung Hom Railway Station (Model No.:2333)



Yunnan Lijiang Airport (Model No.:B4)



Phnom Penh Airport Cambodia (Model No.:B440)



Petropavlovsk-Kamchatsky Airport (Model No.:PL-01)



Yashoda Hospitals Hitec City (Model No.:B430)



West Kowloon Immigration Checkpoint (Model No.:B430)



Singapore Hospital (Model No.:S300)



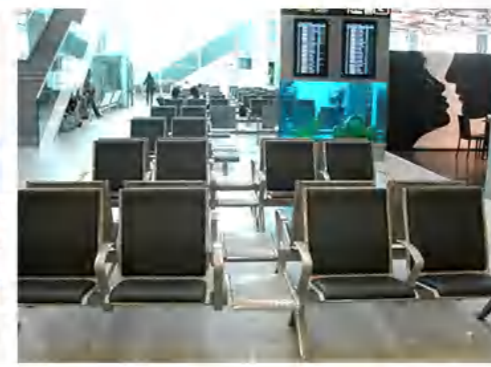
Indian hospital (Model No.:PL-01)



Yangon International New Airport-Burma (Model No.:2368)



Jeddah International Airport-Saudi Arabia (Model No.:A4)



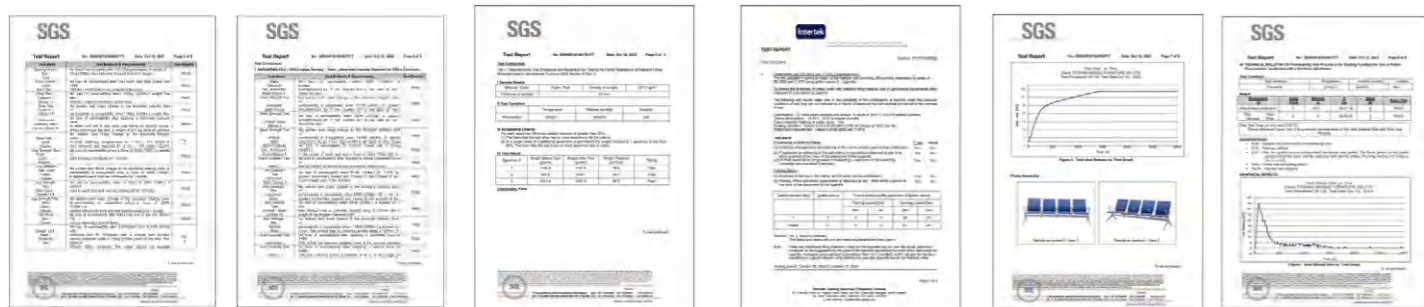
Saudi Arabian Airport (Model No.:2388)



No i Bi International Airport Vietnam (Model No.:2316)

企业荣誉

Corporate Honors



material introduction/PU自结皮材料介绍

Material PK 材料对比

Polyurethane good point PU自结皮优点



高端材料, 30多年来广泛用于高档汽车内饰(仪表台、方向盘等)
Hi-Tech material: Widely use in premium car interior (instrumentpanel, steering wheel etc)for more than 30 years



引进欧美先进RIM技术, 产品一次发泡成型,使用寿命比传统蒙皮(PU/PVC皮革)长3-4倍
Ultra long life (Durable,8 years warranty, 3-4 times servicelife than PU/PVC leather) due to advanced production from thewestern RIM technology to finish by molding injection



泡沫芯层结构, 既有皮的感觉, 又有海绵的舒适感,耐寒性好, 椅子特别适用于寒冷天气。
Adapt to arctic weather (Makes you feel warm & soft even in arcticweather; never break within warranty)



表皮组织严密, 易清洁、易保养、不易滋生细菌, 特别适合医疗配套工程。
Easy to clean, maintenance-free, antimicrobial properties. Especially apply to public / hospital seating solutions.

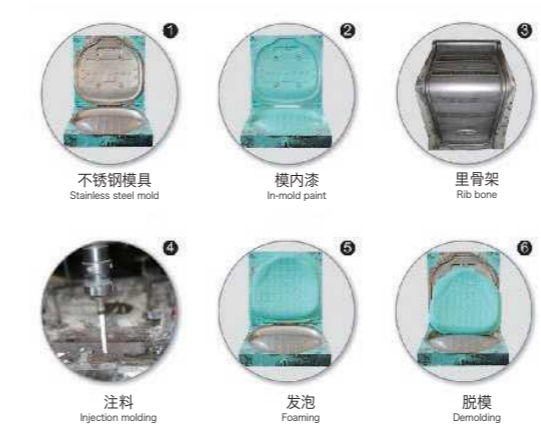


先进CA117阻燃配方, 符合公共场所的高安全要求;CA117\BS5852\ C14\TDCPP(防火):BIFMAX5.115.4-2012(成品椅)
CA117 fire-retardant approval on seat & back cushions.BIFMAX5.115.4-2012 standard for complete chairs to meet safetyrequirements for public area



环保产品,通过欧美SGS严格检测的环保标准"USEPA5021"(无氯氟烃)
Environmental friendly (RoHS, Non-CFC), UV resistance isoptional also.

Polyurethane production processes PU自结皮生产工艺





15 Years

15年专业机场椅定制研发开模生产，专注国际机场航站楼整体方案
15 Years Experience OEM and ODM products working with International Airports Authoritys

International Tendering

Strong and Professional International bidding and tender documentations.

强大专业的投标资质，专业国际国内招投标项目

Cost-Effective

High-Cost-Effective Alternatives for European and American Brand Styles.

高性价比欧美专款的替代方案及款式

OEM

近50款已量产产品可选
Nearly 50 mass-produced products available

ODM

专业研发团队快速定制
Rapid customization by a professional R&D team

佛山市顺德区铭海家具有限公司
Foshan Mingle Furniture Co.,Ltd
<https://fsmingle.en.alibaba.com>

Adani 12000 seats

Successfully won the contract and supplied to world class Top100 Adani Group with more than 12000 seats
成功为世界级机场集团百强公司提供座椅及配套航站楼家具解决方案



Testing Report

Complete Enterprise Quality Management Report and Product Testing Report

全套专业及完善的机场座椅国内外测试报告及材料报告

ADANI GROUP INDIA

11000 SEATS WITH 7000 TROLLYES

- *New Mumbai Airports
- *Ahmedabad Airports
- *Jaipur Airports
- *Guwahati Airports
- *Mumbai Airports

● 规格说明 specifications

- 座/背: 高强度公区专用马鞍皮软垫
- 扶手: 高强度压铸铝合金表面喷涂处理
- 站脚: 高强度压铸铝合金表面喷涂处理
- 横梁: 优质金属横梁表面喷涂处理

● 适用场所 sites Applicable

机场、车站、码头及其它公共场所
Air port, bus station, dock and other spaces



Model: **ITA-01#**

Seat and back : AG-1 Saddle Leather (Fire resistance, easy cleaning, waterproof).
Arm and Leg: Die-casting aluminum with power coating finished
Beam: High standard steel with power coating finished
USB Power station is optional



● 适用场所 sites Applicable

机场、车站、码头及其它公共场所
Air port, bus station, dock and other spaces

● 规格说明 specifications

- 座/背: PU发泡内含高强度五金铁架
 - 扶手: 高强度压铸铝合金表面喷涂处理
 - 站脚: 高强度压铸铝合金表面喷涂处理
 - 横梁: 优质金属横梁表面喷涂处理
- Seat and back** : PU injection seat and back with metal frame inside
Arm and Leg: Die-casting aluminum with power coating finished
Beam: High standard steel with power coating finished
USB Power station is optional



Model: **B4#**



• 规格说明 specifications

座/背: PU发泡内含高强度五金铁架
 扶手: 高强度压铸铝合金表面喷涂处理
 站脚: 高强度压铸铝合金表面喷涂处理
 横梁: 优质金属横梁表面喷涂处理

• 适用场所 sites Applicable

机场、车站、码头及其它公共场所
 Air port, bus station, dock and other spaces



Seat and back : PU injection seat and back with metal frame inside
 Arm and Leg: Die-casting aluminum with power coating finished
 Beam: High standard steel with power coating finished
 USB Power station is optional

Model: **PL02T#**



Model: **PL02#**

• 规格说明 specifications

座/背: PU发泡内含高强度五金铁架
 扶手: 高强度压铸铝合金表面喷涂处理
 站脚: 高强度压铸铝合金表面喷涂处理
 横梁: 优质金属横梁表面喷涂处理

• 适用场所 sites Applicable

机场、车站、码头及其它公共场所
 Air port, bus station, dock and other spaces

Seat and back : PU injection seat and back with metal frame inside
 Arm and Leg: Die-casting aluminum with power coating finished
 Beam: High standard steel with power coating finished
 USB Power station is optional



Seat and back : PU injection seat and back with metal frame inside
 Arm and Leg: Die-casting aluminum with power coating finished
 Beam: High standard steel with power coating finished
 USB Power station is optional



• 适用场所 sites Applicable

机场、车站、码头及其它公共场所
 Air port, bus station, dock and other spaces



• 规格说明 specifications

座/背: PU发泡内含高强度五金铁架
 扶手: 高强度压铸铝合金表面喷涂处理
 站脚: 高强度压铸铝合金表面喷涂处理
 横梁: 优质金属横梁表面喷涂处理

• 适用场所 sites Applicable

机场、车站、码头及其它公共场所
 Air port, bus station, dock and other spaces



Model: S360#

• 规格说明 specifications

座/背: PU发泡内含高强度五金铁架
 扶手: 高强度压铸铝合金表面喷涂处理
 站脚: 高强度压铸铝合金表面喷涂处理
 横梁: 优质金属横梁表面喷涂处理

Seat and back : PU injection seat and back with metal frame inside
 Arm and Leg: Die-casting aluminum with power coating finished
 Beam: High standard steel with power coating finished
 USB Power station is optional



Model: S340#



• 规格说明 specifications

- 座/背: PU发泡内含高强度五金铁架
- 扶手: 高强度压铸铝合金表面喷涂处理
- 站脚: 高强度压铸铝合金表面喷涂处理
- 横梁: 优质金属横梁表面喷涂处理

• 适用场所 sites Applicable

机场、车站、码头及其它公共场所
Air port, bus station, dock and other spaces

Seat and back : PU injection seat and back with metal frame inside

Arm and Leg: Die-casting aluminum with power coating finished

Beam: High standard steel with power coating finished

USB Power station is optional



Model: S320#



Model: S350#

• 规格说明 specifications

- 座/背: PU发泡内含高强度五金铁架
- 扶手: 高强度压铸铝合金表面喷涂处理
- 站脚: 高强度压铸铝合金表面喷涂处理
- 横梁: 优质金属横梁表面喷涂处理

Seat and back : PU injection seat and back with metal frame inside

Arm and Leg: Die-casting aluminum with power coating finished

Beam: High standard steel with power coating finished

USB Power station is optional



• 适用场所 sites Applicable

机场、车站、码头及其它公共场所
Air port, bus station, dock and other spaces



• 适用场所 sites Applicable

机场、车站、码头及其它公共场所
Air port, bus station, dock and other spaces

• 规格说明 specifications

座/背: PU发泡内含高强度五金铁架
扶手: 高强度压铸铝合金表面喷涂处理
站脚: 高强度压铸铝合金表面喷涂处理
横梁: 优质金属横梁表面喷涂处理

Seat and back : PU injection seat and back with metal frame inside

Arm and Leg: Die-casting aluminum with power coating finished

Beam: High standard steel with power coating finished

USB Power station is optional



Model: **GT01#**



• 适用场所 sites Applicable

机场、车站、码头及其它公共场所
Air port, bus station, dock and other spaces



• 规格说明 specifications

座/背: PU发泡内含高强度五金铁架
扶手: 高强度压铸铝合金表面喷涂处理
站脚: 高强度压铸铝合金表面喷涂处理
横梁: 优质金属横梁表面喷涂处理

Seat and back : PU injection seat and back with metal frame inside

Arm and Leg: Die-casting aluminum with power coating finished

Beam: High standard steel with power coating finished

USB Power station is optional



Model: **GT04#**



• 适用场所 sites Applicable

机场、车站、码头及其它公共场所
Air port, bus station, dock and other spaces



Model: **PL05#**

• 规格说明 specifications

座/背: PU发泡内含高强度五金铁架
扶手: 高强度压铸铝合金表面喷涂处理
站脚: 高强度压铸铝合金表面喷涂处理
横梁: 优质金属横梁表面喷涂处理

Seat and back: PU injection seat and back with metal frame inside
Arm and Leg: Die-casting aluminum with power coating finished
Beam: High standard steel with power coating finished
USB Power station is optional



Model: **PL01#**

• 适用场所 sites Applicable

机场、车站、码头及其它公共场所
Air port, bus station, dock and other spaces

• 规格说明 specifications

座/背: PU发泡内含高强度五金铁架
扶手: 高强度压铸铝合金表面喷涂处理
站脚: 高强度压铸铝合金表面喷涂处理
横梁: 优质金属横梁表面喷涂处理

Seat and back: PU injection seat and back with metal frame inside
Arm and Leg: Die-casting aluminum with power coating finished
Beam: High standard steel with power coating finished
USB Power station is optional





Model: 2368#

• 适用场所 sites Applicable

机场、车站、码头及其它公共场所
Air port, bus station, dock and other spaces

• 规格说明 specifications

座/背: PU发泡内含高强度五金铁架
扶手: 高强度压铸铝合金表面喷涂处理
站脚: 高强度压铸铝合金表面喷涂处理
横梁: 优质金属横梁表面喷涂处理



Seat and back : PU injection seat and back with metal frame inside
Arm and Leg: Die-casting aluminum with power coating finished
Beam: High standard steel with power coating finished
USB Power station is optional



Seat and back : PU injection seat and back with metal frame inside
Arm and Leg: Die-casting aluminum with power coating finished
Beam: High standard steel with power coating finished
USB Power station is optional 0

• 适用场所 sites Applicable

机场、车站、码头及其它公共场所
Air port, bus station, dock and other spaces

• 规格说明 specifications

座/背: PU发泡内含高强度五金铁架
扶手: 高强度压铸铝合金表面喷涂处理
站脚: 高强度压铸铝合金表面喷涂处理
横梁: 优质金属横梁表面喷涂处理





Model: **F2#**

• 适用场所 sites Applicable

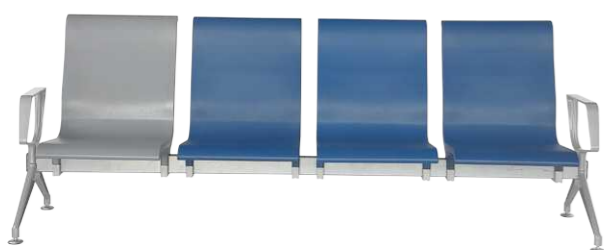
机场、车站、码头及其它公共场所
Air port, bus station, dock and other spaces

• 规格说明 specifications

座/背: PU发泡内含高强度五金铁架
扶手: 高强度压铸铝合金表面喷涂处理
站脚: 高强度压铸铝合金表面喷涂处理
横梁: 优质金属横梁表面喷涂处理



Seat and back : PU injection seat and back with metal frame inside
Arm and Leg: Die-casting aluminum with power coating finished
Beam: High standard steel with power coating finished
USB Power station is optional



• 规格说明 specifications

座/背: PU发泡内含高强度五金铁架
扶手: 高强度压铸铝合金表面喷涂处理
站脚: 高强度压铸铝合金表面喷涂处理
横梁: 优质金属横梁表面喷涂处理

Seat and back : PU injection seat and back with metal frame inside
Arm and Leg: Die-casting aluminum with power coating finished
Beam: High standard steel with power coating finished
USB Power station is optional

• 适用场所 sites Applicable

机场、车站、码头及其它公共场所
Air port, bus station, dock and other spaces



Model: **F220#**



Model: **K1#**



Model: **K2#**

● 适用场所 sites Applicable

机场、车站、码头及其它公共场所
Air port, bus station, dock and other spaces

● 规格说明 specifications

座/背: PU发泡内含高强度五金铁架
扶手: 高强度压铸铝合金表面喷涂处理
站脚: 高强度压铸铝合金表面喷涂处理
横梁: 优质金属横梁表面喷涂处理

Seat and back : PU injection seat and back with metal frame inside
Arm and Leg: Die-casting aluminum with power coating finished
Beam: High standard steel with power coating finished
USB Power station is optional



● 适用场所 sites Applicable

机场、车站、码头及其它公共场所
Air port, bus station, dock and other spaces

● 规格说明 specifications

座/背: PU发泡内嵌多层板
扶手: 高强度压铸铝合金表面喷涂处理
站脚: 高强度压铸铝合金表面喷涂处理
横梁: 优质金属横梁表面喷涂处理

Seat and back : PU foam embedded with multi-layer board
Arm and Leg: Die-casting aluminum with power coating finished
Beam: High standard steel with power coating finished
USB Power station is optional



Chair Armrest



• 适用场所 sites Applicable

机场、车站、码头及其它公共场所
Air port, bus station, dock and other spaces

• 规格说明 specifications

座/背: 超纤高密度海绵含高强度五金铁架
扶手: 高强度压铸铝合金表面喷涂处理
站脚: 高强度压铸铝合金表面喷涂处理
横梁: 优质金属横梁表面喷涂处理

Seat and back : Superfine high-density sponge with high-strength metal frame
Arm and Leg: Die-casting aluminum with power coating finished
Beam: High standard steel with power coating finished
USB Power station is optional



Model: 2316T#



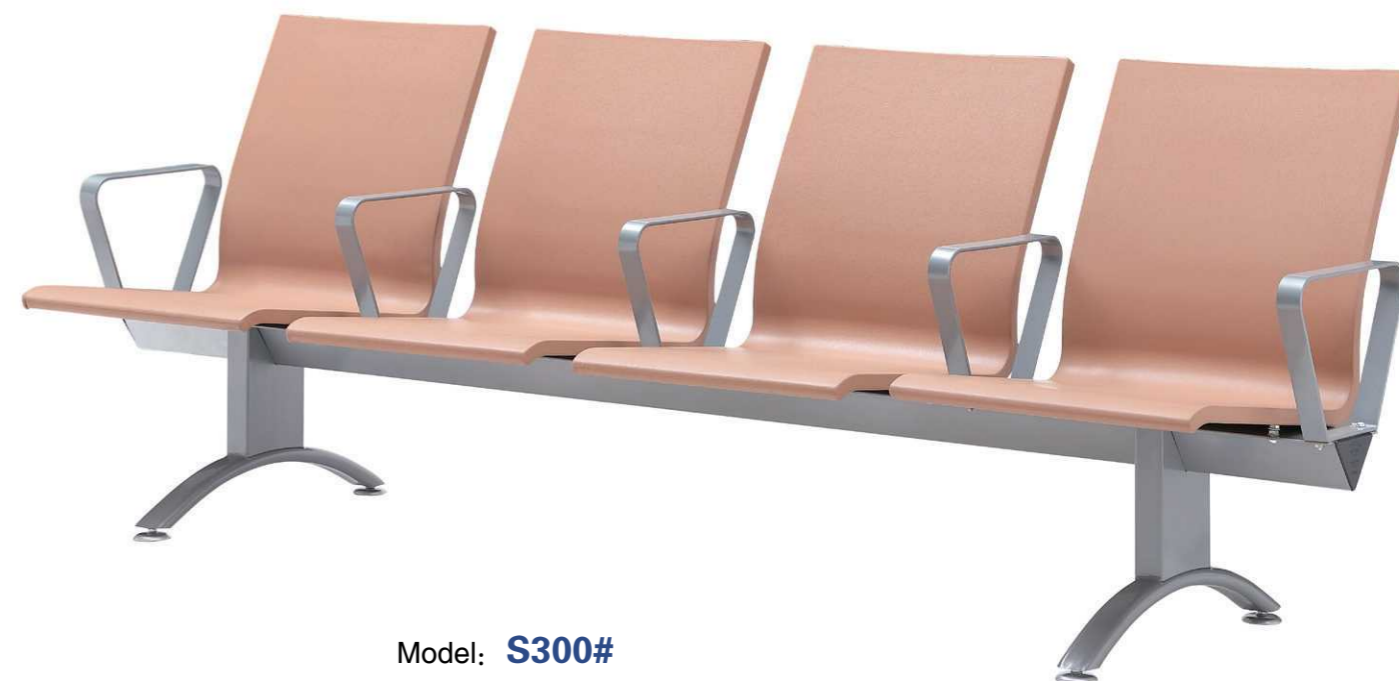
• 适用场所 sites Applicable

机场、车站、码头及其它公共场所
Air port, bus station, dock and other spaces

• 规格说明 specifications

座/背: PU发泡内含高强度五金铁架
扶手: 高强度压铸铝合金表面喷涂处理
站脚: 高强度压铸铝合金表面喷涂处理
横梁: 优质金属横梁表面喷涂处理

Seat and back : PU injection seat and back with metal frame inside
Arm and Leg: Die-casting aluminum with power coating finished
Beam: High standard steel with power coating finished
USB Power station is optional



Model: S300#





• 规格说明 specifications

座/背: PU发泡内嵌多层板

扶手: 高强度压铸铝合金表面喷涂处理

站脚: 高强度压铸铝合金表面喷涂处理

横梁: 优质金属横梁表面喷涂处理

Seat and back : PU foam embedded with multilayer board

Arm and Leg: Die-casting aluminum with power coating finished

Beam: High standard steel with power coating finished

USB Power station is optional

• 适用场所 sites Applicable

机场、车站、码头及其它公共场所

Air port, bus station, dock and other spaces



Model: **BOW#**



Model : 2817#

• 规格说明 specifications

座/背: PU发泡内嵌多层板

扶手: 高强度压铸铝合金表面喷涂处理

站脚: 高强度压铸铝合金表面喷涂处理

横梁: 优质金属横梁表面喷涂处理

• 适用场所 sites Applicable

机场、车站、码头及其它公共场所

Air port, bus station, dock and other spaces



Seat and back : PU foam embedded with multilayer board

Arm and Leg: Die-casting aluminum with power coating finished

Beam: High standard steel with power coating finished

USB Power station is optional



• 规格说明 specifications

- 座/背: 多层弯实木板
- 扶手: 高强度压铸铝合金表面喷涂处理
- 站脚: 高强度压铸铝合金表面喷涂处理
- 横梁: 优质金属横梁表面喷涂处理

- Seat and back : Plywood with laminated finished
- Arm and Leg: Die-casting aluminum with power coating finished
- Beam: High standard steel with power coating finished
- USB Power station is optional

• 适用场所 sites Applicable

机场、车站、码头及其它公共场所
Air port, bus station, dock and other spaces



Model : 5110#



Model : PL07#



• 适用场所 sites Applicable

机场、车站、码头及其它公共场所
Air port, bus station, dock and other spaces

• 规格说明 specifications

- 座/背: PU发泡内含高强度五金铁架
- 扶手: 高强度压铸铝合金表面喷涂处理
- 站脚: 高强度压铸铝合金表面喷涂处理
- 横梁: 优质金属横梁表面喷涂处理

- Seat and back : PU injection seat and back with metal frame inside
- Arm and Leg: Die-casting aluminum with power coating finished
- Beam: High standard steel with power coating finished
- USB Power station is optional





Model: 5220pu

• 规格说明 specifications

- 座/背: 多层弯实木板+西皮软垫
- 扶手: 高强度压铸铝合金表面喷涂处理
- 站脚: 高强度压铸铝合金表面喷涂处理
- 横梁: 优质金属横梁表面喷涂处理
- Seat and back : Plywood with laminated finished with PU upholstery
- Arm and Leg: Die-casting aluminum with power coating finished
- Beam: High standard steel with power coating finished
- USB Power station is optional

• 适用场所 sites Applicable

机场、车站、码头及其它公共场所
Air port, bus station, dock and other spaces



Model: 5110



Model: 5220#

• 规格说明 specifications

- 座/背: 多层弯实木板
- 扶手: 高强度压铸铝合金表面喷涂处理
- 站脚: 高强度压铸铝合金表面喷涂处理
- 横梁: 优质金属横梁表面喷涂处理
- Seat and back : Plywood with laminated finished
- Arm and Leg: Die-casting aluminum with power coating finished
- Beam: High standard steel with power coating finished
- USB Power station is optional



• 适用场所 sites Applicable

机场、车站、码头及其它公共场所
Air port, bus station, dock and other spaces





The increase in sitting has been accompanied by a proportional increase in back problems. When we keep a wrong sitting posture, the elasticity of our spine and joints is reduced and our muscles become fatigued,



• 规格说明 specifications

- 座/背: PU发泡内含高强度五金铁架
- 扶手: 高强度压铸铝合金表面喷涂处理
- 站脚: 高强度压铸铝合金表面喷涂处理
- 横梁: 优质金属横梁表面喷涂处理

• 适用场所 sites Applicable

机场、车站、码头及其它公共场所
Air port, bus station, dock and other spaces

- Seat and back : PU injection seat and back with metal frame inside
- Arm and Leg: Die-casting aluminum with power coating finished
- Beam: High standard steel with power coating finished
- USB Power station is optional



Model: **B430S#**

• 规格说明 specifications

- 座/背: PU发泡内含高强度五金铁架
- 扶手: 高强度压铸铝合金表面喷涂处理
- 站脚: 高强度压铸铝合金表面喷涂处理
- 横梁: 优质金属横梁表面喷涂处理

- Seat and back : PU injection seat and back with metal frame inside
- Arm and Leg: Die-casting aluminum with power coating finished
- Beam: High standard steel with power coating finished
- USB Power station is optional

• 适用场所 sites Applicable

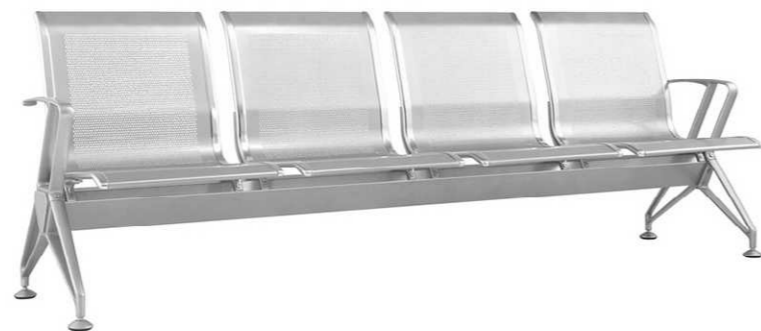
机场、车站、码头及其它公共场所
Air port, bus station, dock and other spaces



Model: **B440#**

• 适用场所 sites Applicable

机场、车站、码头及其它公共场所
Air port, bus station, dock and other spaces



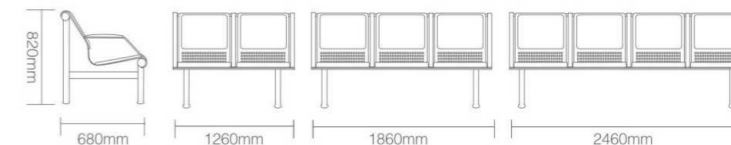
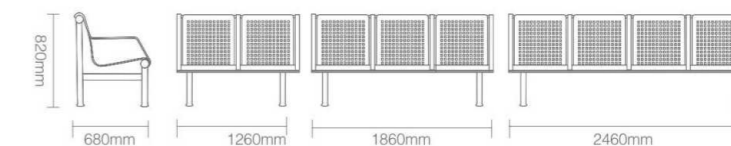
Model: **ML-2332#**



● 2500-1



● 2500



• 规格说明 specifications

座/背: 优质201不锈钢座板配铝边条
扶手: 高强度压铸铝合金表面喷涂处理
站脚: 高强度压铸铝合金表面喷涂处理
横梁: 优质金属横梁表面喷涂处理

Seat and back: 201 stainless steel with aluminium profile

Arm and Leg: Die-casting aluminum with power coating finished

Beam: High standard steel with power coating finished

USB Power station is optional

• 规格说明 specifications

座/背: 优质冷轧钢板数控冲网(油压)成型

扶手: 优质钢板压制焊接成型

站脚: 优质钢板压制焊接成型

横梁: 优质金属横梁表面喷涂处理

Seat and back: Oil pressed with high quality cold-rolled steel by digital controlling. Side is strengthened and decorated by solid oblate steel pipe.

Arm and Leg: Steel

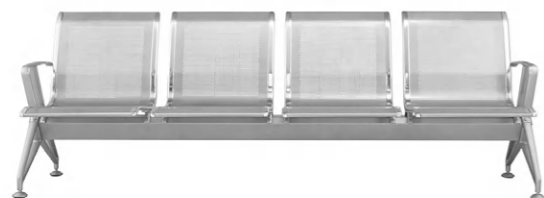
Beam: High standard steel with power coating finished

USB Power station is optional



• 适用场所 sites Applicable

机场、车站、码头及其它公共场所
Air port, bus station, dock and other spaces





Model: **ML-B3#**



• 规格说明 specifications

座/背: PU发泡内含高强度五金铁架
 扶手: 高强度压铸铝合金表面喷涂处理
 站脚: 高强度压铸铝合金表面喷涂处理
 横梁: 优质金属横梁表面喷涂处理

Seat and back : PU injection seat and back with metal frame inside
 Arm and Leg: Die-casting aluminum with power coating finished
 Beam: High standard steel with power coating finished
 USB Power station is optional

• 适用场所 sites Applicable

机场、车站、码头及其它公共场所
 Air port,bus station, dock andother spaces



• 规格说明 specifications

座/背: PU发泡内含高强度五金铁架
 扶手: 高强度压铸铝合金表面喷涂处理
 站脚: 高强度压铸铝合金表面喷涂处理
 横梁: 优质金属横梁表面喷涂处理

Seat and back : PU injection seat and back with metal frame inside
 Arm and Leg: Die-casting aluminum with power coating finished
 Beam: High standard steel with power coating finished
 USB Power station is optional

• 适用场所 sites Applicable

机场、车站、码头及其它公共场所
 Air port,bus station, dock andother spaces



Model: **S03#**

Model: **HY-501#**



Model: **2691PU#**



• 规格说明 specifications

- 座/背: PU发泡内含高强度五金铁架
- 扶手: 高强度压铸铝合金表面喷涂处理
- 站脚: 高强度压铸铝合金表面喷涂处理
- 横梁: 优质金属横梁表面喷涂处理

- Seat and back : PU injection seat and back with metal frame inside
- Arm and Leg: Die-casting aluminum with power coating finished
- Beam: High standard steel with power coating finished
- USB Power station is optional



Model: **2698H#**

• 适用场所 sites Applicable

机场、车站、码头及其它公共场所
Air port, bus station, dock and other spaces



Model: **ITA-R1#**

Options for Coffee Tables



抗培特
Compact Laminate Board



不锈钢茶几
Stainless Steel 304#



锂化板
Lithiated Board



人造石
Marble

POWER SOLUTIONS FOR SEATING SYSTEMS



Arms with Charging Unit



Coffee table with Charging



Chair beam with Charging



Pantone or RAL Colour

Note: The Pantone Colour are for reference only, Detailed information please accordana with the final products

THE COLOR PALETTE



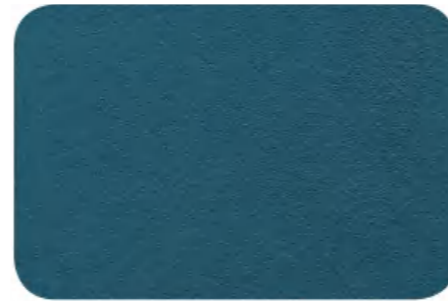
7574C Coffee



8366C Blue



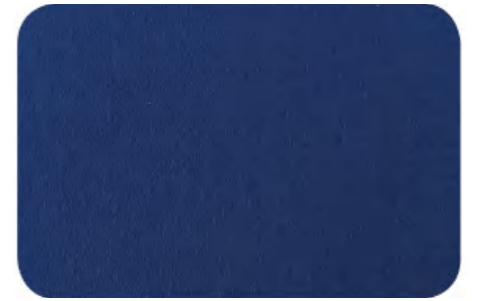
1807C Red



322ULight Green



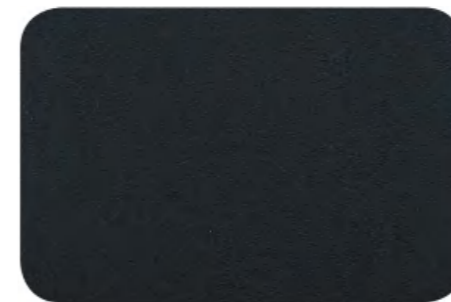
430UGray



287C Light Blue



7630C Brown



Black



RAL 4008

Airport Counters

Immigration Counter





Console desk



Airport trolleys



Tensa Barrier

