

The background of the image features a dark, abstract composition of overlapping geometric shapes, primarily triangles and quadrilaterals, in shades of dark grey and black. A prominent, bright blue diagonal line cuts across the center of the image, adding a dynamic visual element. The Mingle logo is centered in the upper half of the frame.

**Mingle®**

**CONTROL ROOM SOLUTIONS**

## ABOUT US

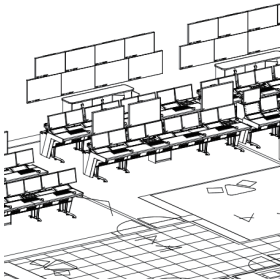
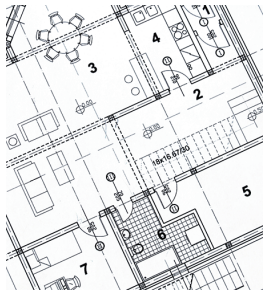
OUR REPUTATION FOR THE DESIGN AND MANUFACTURE OF EXCEPTIONAL CONTROL-ROOM CONSOLES AND SOLUTIONS IS BUILT ON 30 YEARS OF EXPERIENCE, WITH A FOCUS ON CUSTOMER SERVICE AND A RELENTLESS PURSUIT OF INNOVATION AND TECHNICAL EXCELLENCE.



<https://fsmingle.en.alibaba.com/>



# OUR PROCESS



## 1.DESIGN

Our experienced design team will work with you to develop solutions that meet your exact requirements. This includes detailed CAD drawings and high quality rendering of the initial phase to visualize your solution.



## 2.MANUFACTURE

We are proud of our high standards of manufacture and quality control. Our team combines experience and passion with the latest materials, cutting-edgetechnologies and processes so we can exceed your expectations every time. WVe welcome you to observe and track production with a factory tour.



## 3.IMPLEMENTATION

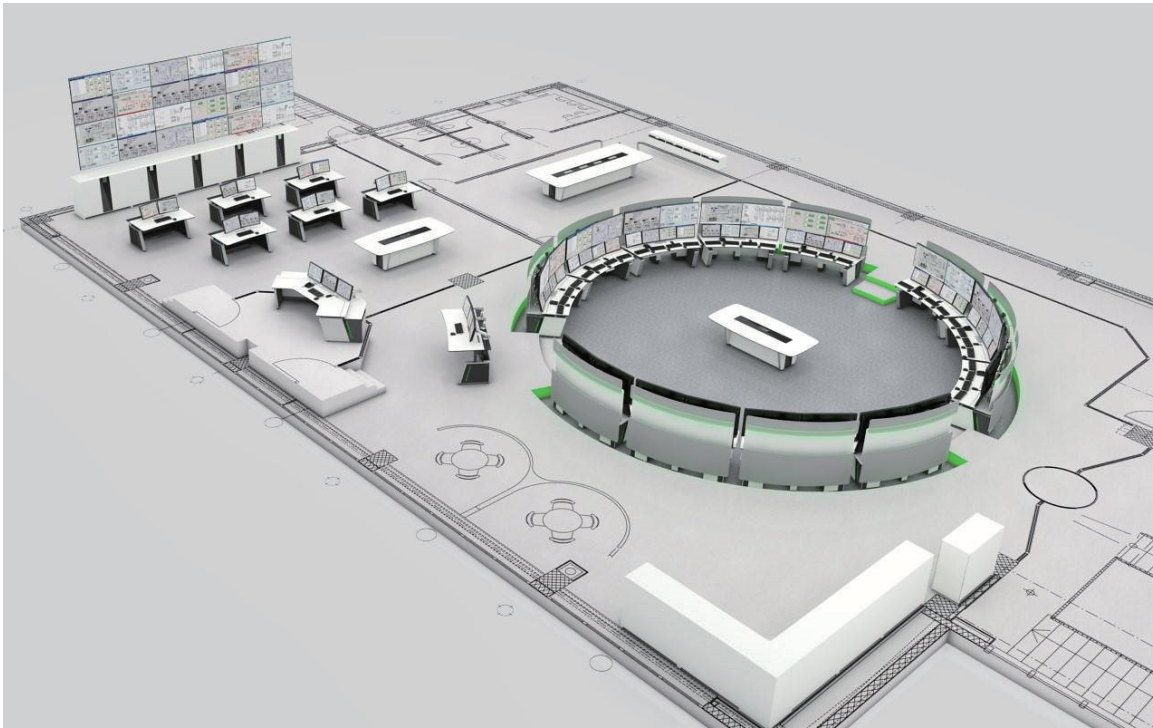
We make sure all of our consoles are easy to install for easy execution. The installation will match your final design plan to ensure we meet your specifications, and our team will ensure every piece of equipment is delivered safely and on time, giving you complete peace of mind.

## WORLD CLASS DELIVERY

WORLD CLASS INNOVATION, PRODUCT DESIGN AND CUSTOMER SERVICE ARE AT THE FOREFRONT OF THE LUNDHALSEY OFFERING AND WE ARE REALLY PROUD TO DELIVER COMPLETE SOLUTIONS TO NEW AND REPEAT DIRECT CUSTOMERS GLOBALLY.



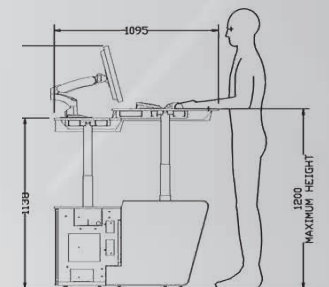
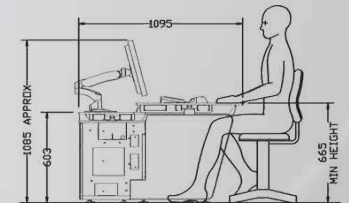
## THE IMPORTANCE OF DESIGN



THE BEST DESIGNS BRING TO-GETHER SLEEK AESTHETICS AND HIGH FUNCTION, TAKING IN A WIDE RANGE OF OPERATIONAL, TECHNICAL AND SECURITY FACTORS.

REQUEST A DEMO

3D





## CUSTOM VIRTUAL REALITY

WITH OUR CUSTOM VR SERVICE, YOU CAN SELECT AND CUSTOMISE YOUR OWN CONSOLES AND SCREENS THEN ADD THE PRE-CISE COMPONENTS AND ACCESSORIES YOU NEED.

You can zoom in, walk through and explore from every angle, scrutinising the lifelike detail - from cable management and equipment mounting accessories to screen sightlines, access and spacing

We can put your bespoke consoles and accessories into a 3D plan of the room and building where they'll be used, so you can take a VR walk around and inspect the facility. We can even add your own branding and graphics.



# AREA COMMAND CONSOLE



AVIATION



## AREA COMMAND CONSOLE



- // Ergonomically optimised design with motorised height-adjustable sit/stand work surfaces and motorised visual displays for precise screen positioning
- // Motorised equipment wedge section, integrated loudspeakers, and customisable task lighting to enhance usability & operator communication during critical air traffic operations
- // Highly Flexible technical enclosure for power, data Management, equipment mounting, cable management & ventilation, with excellent access for maintenance.



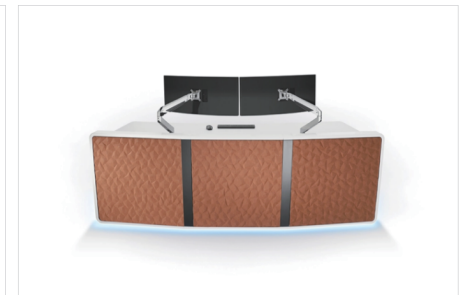
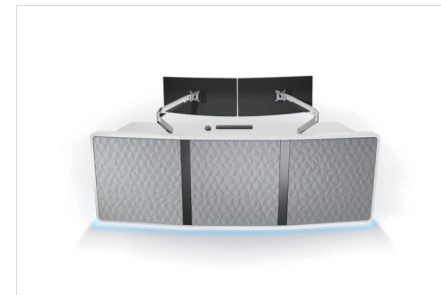
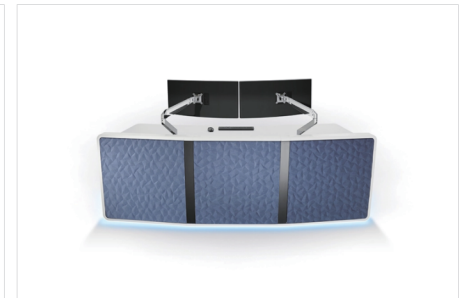
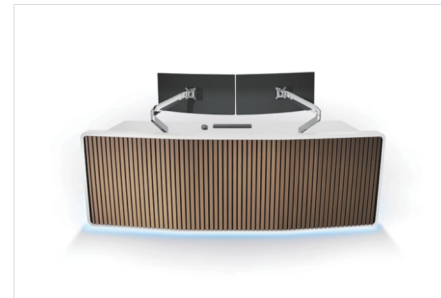


## OPTIMA FLOAT



- // Unique 'Floating' Design – Patent Pending
- // Stunning Aesthetics & Customisation Options
- // Ergonomic Sit-Stand AIR or Fixed-Height Options

## OPTIMA'CANVAS



## OPTIMA FREE

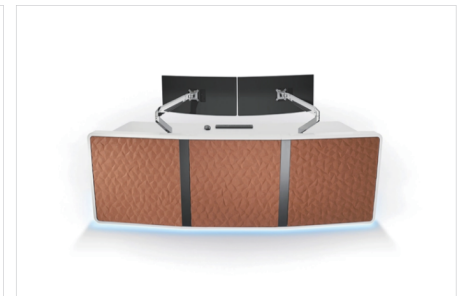
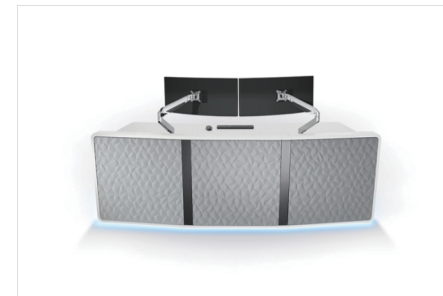
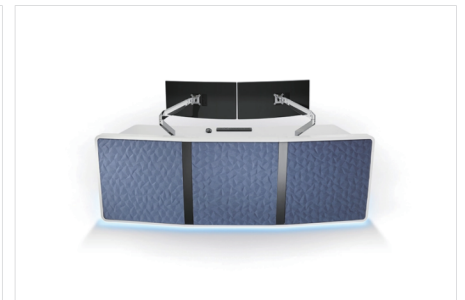
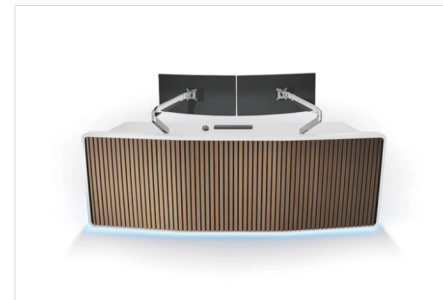


// Streamlined Freestanding Configuration

// Stunning Aesthetics & Customisation Options

// Ergonomic Sit-Stand AIR or Fixed-Height Options

## OPTIMA'CANVAS



# KONTROL RANGE



AVIATION



SECURITY /  
MILITARY /



OIL, GAS &  
PROCESS



WASTE TO  
ENERGY

# THE KONTROL RANGE

OUR AWARD-WINNING KONTROL CONSOLE RANGE PROVIDES A PREMIUM, FEATURE RICH SOLUTION FOR ANY MISSION CRITICAL CONTROL ROOM APPLICATION

Our new Kontrol Plus console joins our market-leading Kontrol Command and Kontrol Air models to deliver exceptional performance in mission critical control rooms. Kontrol Plus incorporates our very latest console design and innovation and a premium aesthetic design, including an all-new illuminated 'floating' work surface. All the Kontrol consoles offer high quality detailing, with leading ergonomic and functional features



## KONTROL PLUS

- // Stunning illuminated 'floating' work surface design
- // Elegant high-gloss detailing
- // Ergonomic design with premium features



## KONTROL COMMAND

- // Fixed height console with task lighting
- // Integrated cable management system and power distribution
- // Kontrol monitor arm system



## KONTROL AIR

- // Height adjustable console section from minimum 665mm-1200mm maximum height
- // 250 kg lifting capability
- // Includes Kontrol Command features - task lighting, monitor arm, cable and power management



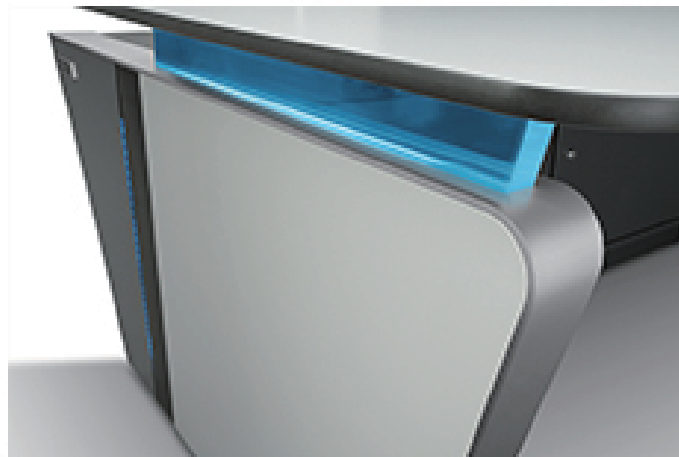
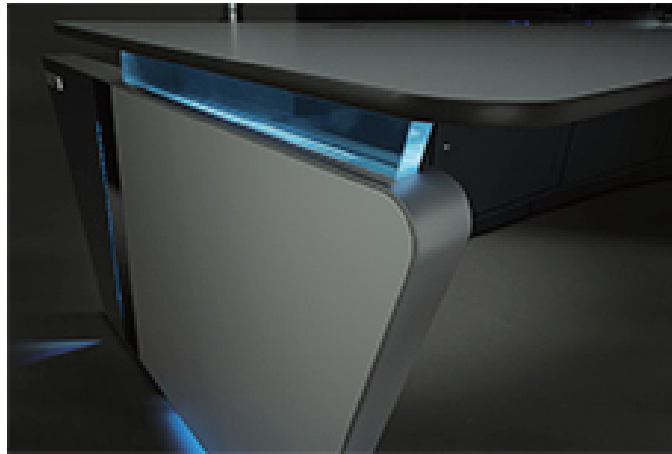


# KONTROL RANGE

## FIXED HEIGHT COMMAND AND CONTROL CONSOLE

The new fixed height Kontrol Plus command-and-control console incorporates our very latest design and technical innovations. A blend of premium aesthetic design and high-quality detailing with high-performing ergonomic and functional features, Kontrol Plus is crafted for optimal performance and operator comfort.

## DESIGN FEATURES





# KONTROL COMMAND



THE ORIGINAL KONTROL  
COMMAND CONSOLE, RECOGNISED  
BY A DBA AWARD FOR DESIGN  
EFFECTIVENESS IN 2018.

This console continues to set an industry benchmark for  
design, functionality, efficiency and ergonomics.

ve design  
**dba**  
effecti

## KONTROL AIR



**A HEIGHT ADJUSTABLE VERSION  
OF THE AWARD-WINNING KON-  
TROL COMMAND CONSOLE.**

Kontrol Air features adjustment from sitting to standing height, for optimal operator comfort and productivity.

# E-TYPE RANGE



TV BROADCAST



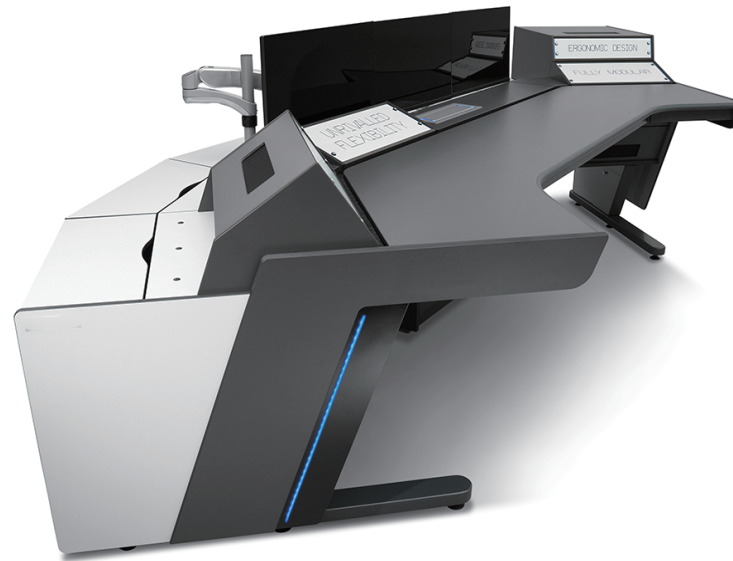
RADIO  
BROADCAST

# THE E-TYPE RANGE

A HEIGHT ADJUSTABLE VERSION-  
OF THE AWARD-WINNING KONTROL  
CONSOLE, KONTROLAIR  
FEATURES ADJUSTMENT FROM  
SITTING TO STANDING HEIGHT,  
FOR OPTIMAL OPERATOR COM-  
FORT AND PRODUCTIVITY.

Designed for TV, Radio & Podcast  
broadcast studios and control rooms

- // Enhanced premium design
- // Sleek, interchangeable, modular equipment pods for optimum flexibility
- // Structurally engineered with heavy duty actuators, the e-Type Air option provides premium height-adjustability to elevate the desk and equipment smoothly and seamlessly.



## NEW E-TYPE I PLUS

- // Enhanced premium design
- // Integrated cable and equipment management with front and rear access
- // Sleek interchangeable and modular equipment pods for optimum flexibility

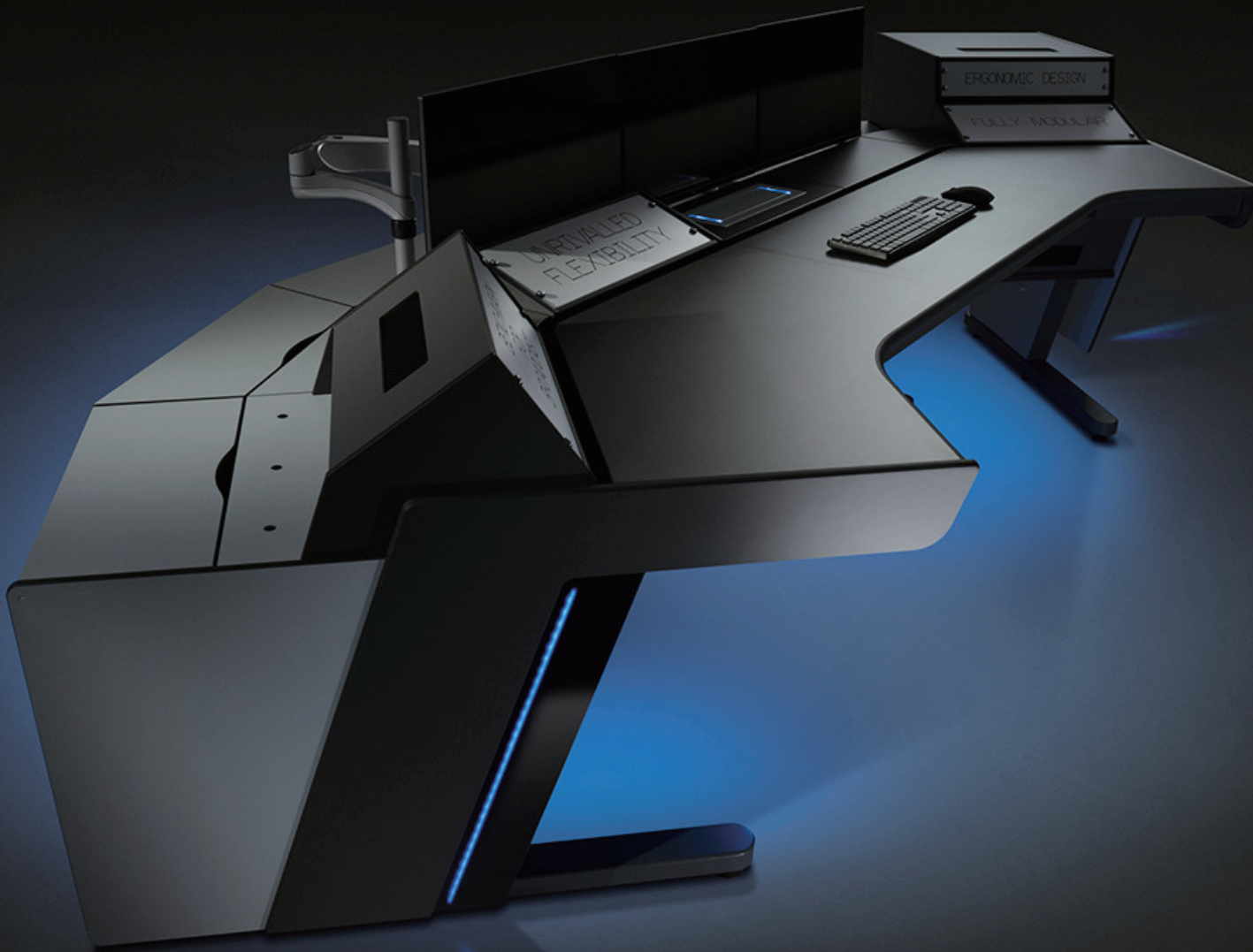
## NEW E-TYPE I AIR PLUS

- // Enhanced premium design
- // Sleek interchangeable modular equipment pods for optimum flexibility
- // Structurally engineered with heavy duty actuators, provides a premium height-adjustable solution capable of lifting the desk and equipment seamlessly

# E-TYPE II PLUS

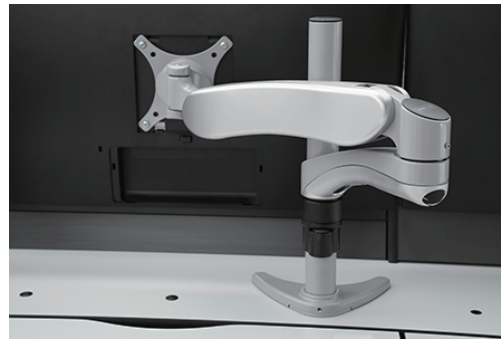
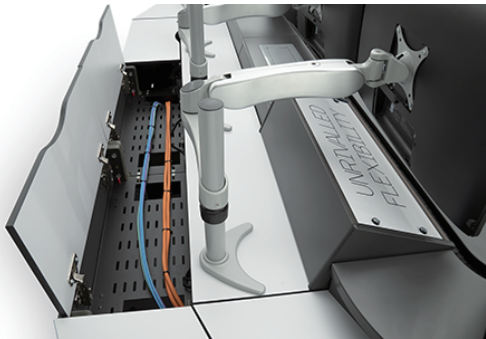
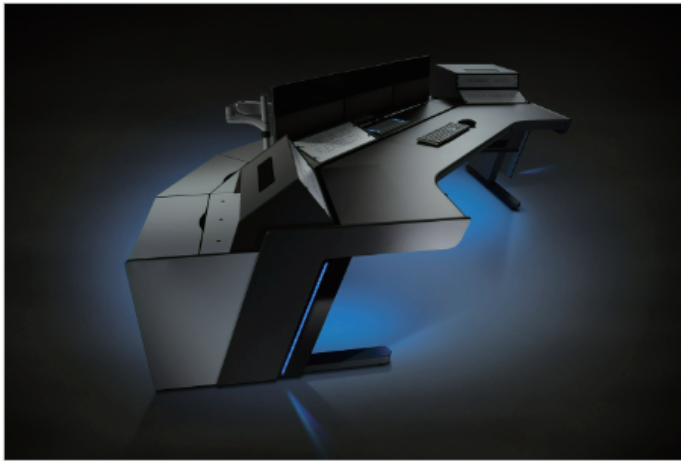
## FIXED HEIGHT BROADCAST CONSOLE

The new e-Type II Plus features our signature high-gloss piano black strip and compact laminate doors and panels. They give easy access to stored equipment and cable management. The clear workspace creates an excellent user experience in any broadcast application.

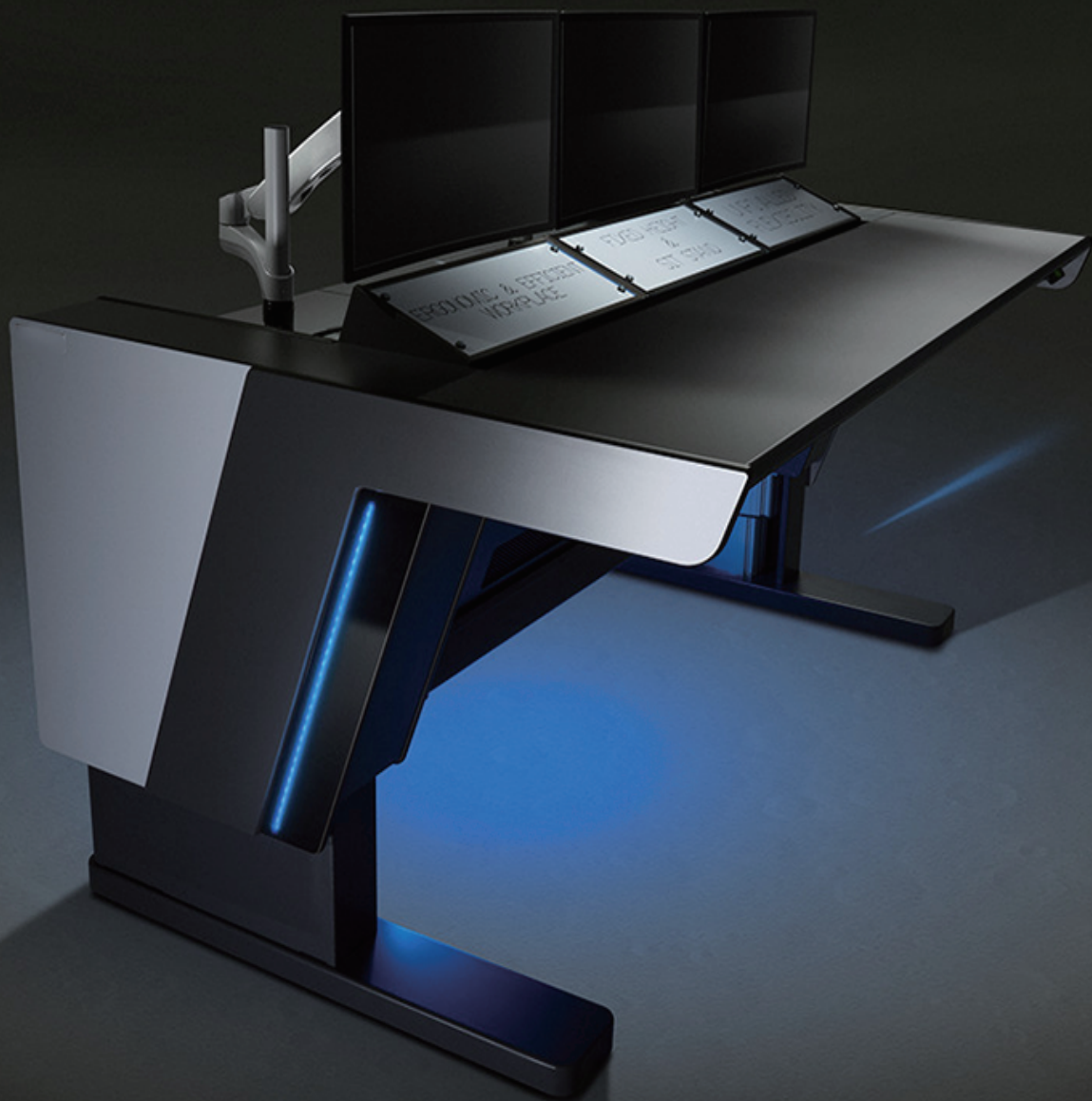




## DESIGN FEATURES





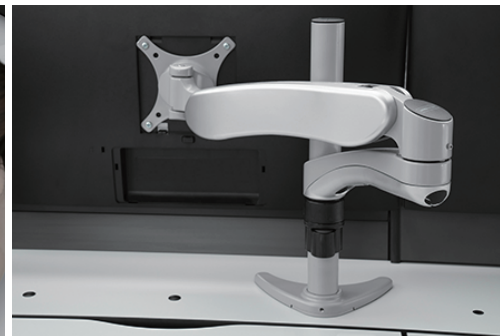
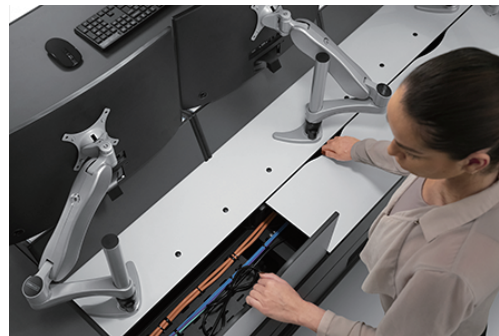
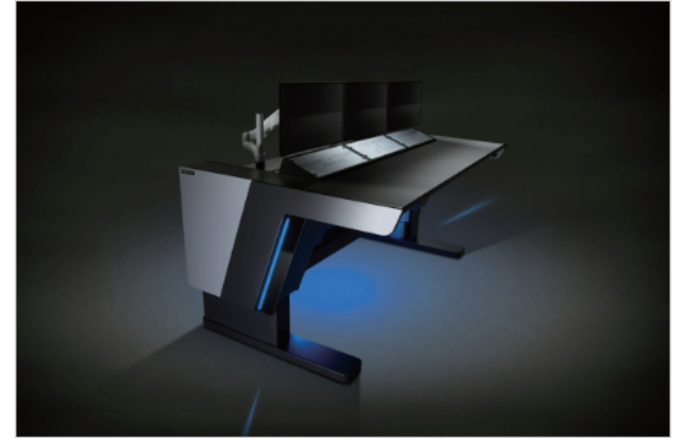


# E-TYPE II AIR PLUS

## HEIGHT-ADJUSTABLE BROADCAST CONSOLE

With the new e-Type II Air Plus, you can enjoy all the advantages of the e-Type II Plus with added height adjustability, to suit your users' needs. The streamlined, modular design, easy cable management and discreet equipment storage make this console a powerful base for precise, productive control room operations in broadcast.

## DESIGN FEATURES



# VISION LINE



AVIATION



SECURITY /  
MILITARY /  
DEFENCE



OIL, GAS &  
PROCESS  
CONTROL



WASTE TO  
ENERGY



# VISIONLINE

## HEIGHT ADJUSTABILITY, EFFICIENCY & PREMIUM DESIGN AESTHETICS COMBINE FOR THE PERFECT, COM- PACT CONTROL ROOM SOLUTION

A streamlined seated or adjustable sit/stand console desk created for user comfort and productivity, for a clutter-free workspace or where space is at a premium.

The Visionline aesthetic design features include our signature high-gloss piano black endpanel, LED accent lighting and a subtle monitor drop-down to the rear of the work surface.



## VISIONLINE

- // Elegant, premium design
- // Ergonomic design with fixed or height adjustable options
- // Mobile app control
- // Work surface cable management and space-saving PC cubby storage



# VISIONLINE

## HEIGHT ADJUSTABLE CONTROL CONSOLE

Visionline is designed for command and control rooms, including AV control rooms, Network Operation Centres (NOC) and Security Operation Centres (SOC)

# X-TYPE



AVIATION



SECURITY /  
MILITARY /  
DEFENCE



OIL, GAS &  
PROCESS  
CONTROL



WASTE TO  
ENERGY



## X-TYPE

### HEIGHT ADJUSTABILITY AND SLEEK INTEGRATION IN A WEDGE LAYOUT COMBINE FOR A PERFECT CONTROL- ROOM SOLUTION

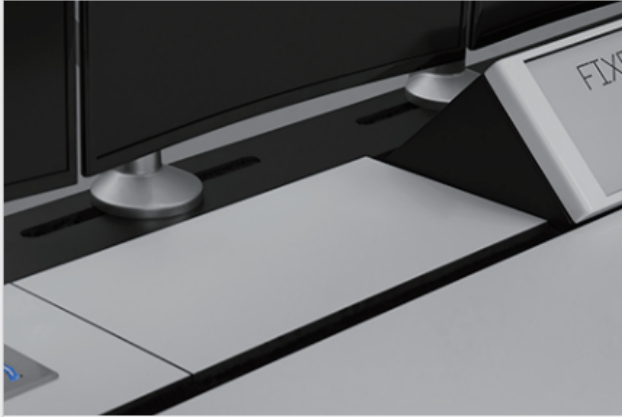
The new x-TYPE has all the streamlined features of the Visionline console - it's uniquely adapted to offer modularity within a wedge equipment console set-up. Its steel fabricated wedge has a front cover that hides 19" rack mount fixings, for a pure and integrated look. Choose seated or adjustable sit/stand for ultimate user comfort and customisation.



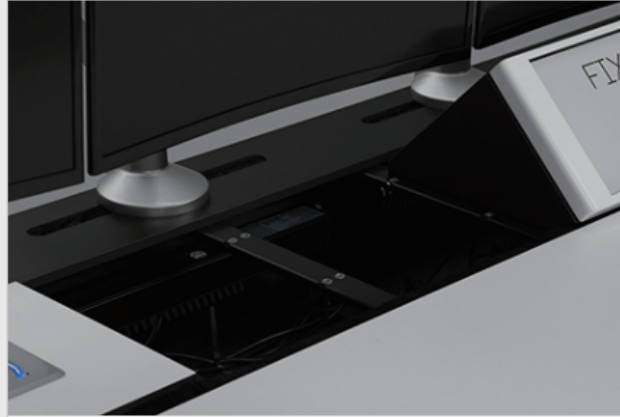
### X-TYPE

- // Enhanced premium design
- // Sleek interchangeable modular equipment pods for optimum flexibility
- // Fixed height or sit/stand options for superior operator comfort

## DESIGN FEATURES



**INTERCHANGEABLE MODULAR EQUIPMENT PODS**



**INTERCHANGEABLE MODULAR EQUIPMENT PODS**



**INTERCHANGEABLE MODULAR EQUIPMENT PODS**



**KONTROL TOUCH**



**PREMIUM ENGINEERED MONITOR ARM**



**NEW LATERALLY ADJUSTABLE ARTICULATED  
MONITOR ARM**

# MISSION CRITICAL CONFERENCE FURNITURE



AVIATION



TV BROADCAST



SECURITY /  
MILITARY /  
DEFENCE



OIL, GAS &  
PROCESS  
CONTROL



RADIO  
BROADCAST



WASTE TO  
ENERGY



SPECIAL  
PROJECTS

## FOR MISSION CRITICAL APPLICATIONS

GLOBAL LEADERS DRIVE THEIR  
BUSINESSES FORWARD AROUND  
OUR MEETING AND CONFERENCE  
TABLES.

Choose LundHalsey's bespoke design service to create stylish and contemporary meeting rooms and conference suites, where business-critical decisions and collaborations happen.

Our leading range of high-quality management and meeting tables and storage units are designed to complement our customisable and adaptable consoles, creating a distinctive and coherent professional environment in your workspace, control room or executive suite. They're easy to expand and reconfigure as your business changes and grows.





## DESIGN FEATURES



**INTEGRATED CABLE MANAGEMENT**



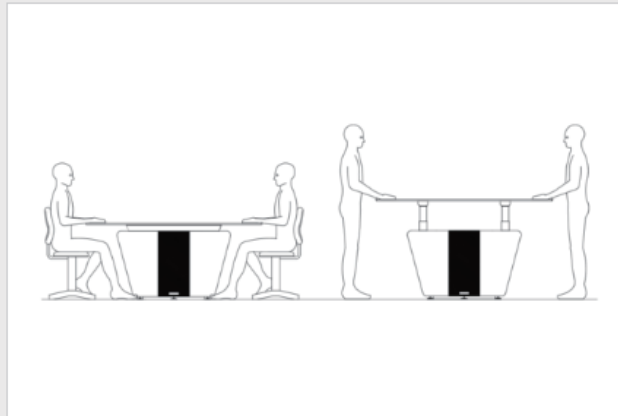
**KONTROL TOUCH**



**SOFT TOUCH STORAGE ACCESS**



**SOFT TOUCH STORAGE ACCESS**



**FIXED HEIGHT OR SIT/STAND**

A large, sleek monitor is mounted on a modern, silver-colored stand. The monitor's screen displays a stunning image of a nebula, featuring swirling clouds of gas in deep blue and vibrant purple, with scattered bright stars. The text "MONITOR STACKS SEATING & ACCESSORIES" is overlaid in white, bold, sans-serif font across the center of the monitor's display. The background is a dark, solid color, making the monitor and its content stand out.

# **MONITOR STACKS SEATING & ACCESSORIES**

## X-TYPE

### PREMIUM DISPLAY SOLUTIONS FOR MISSION CRITICAL APPLICATIONS

LundHalsey offers a high-quality range of engineered monitor stacks and accessories with configurations and options available for every control and command meeting room.



### KUDOSTACK

- Industry-standard monitor stack
- Integrated cable management system
- Fits any size screen, from 9" through to 105"
- UMD, speaker and clock mounts
- Modular design system
- Kudostack speaker stand



### VISIONLINE

- Multiple possible configurations
- Fits any size screen, from 12" through to 120"
- Floor standing, floor bolted, mobile, wall-mounted or ceiling-mounted options
- Modular design
- Cost-effective solution



## CASE STUDIES



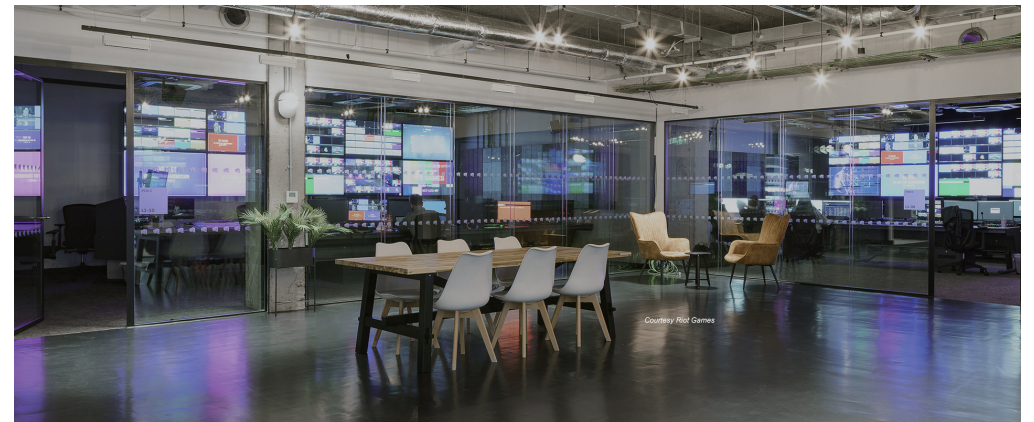




Riot Games was founded in 2006 to develop, publish, and support the most player-focussed games globally, with its debut title the acclaimed League of Legends going on to become the most played PC game in the world following its launch in 2009.

The Dublin based Remote Broadcast Centre (RBC) powered by AWS was the first of a circuit of global broadcasting hubs originally launched under the codename Project Stryker that are strategically located around the world eight hours apart to create a 'follow-the-sun' broadcast model supporting live esports productions 24/7/ 365.

Mingle were engaged over a 4-month project lifecycle to initially design the Dublin based control room facility including planning the operational layout and the custom design of premium control room consoles.





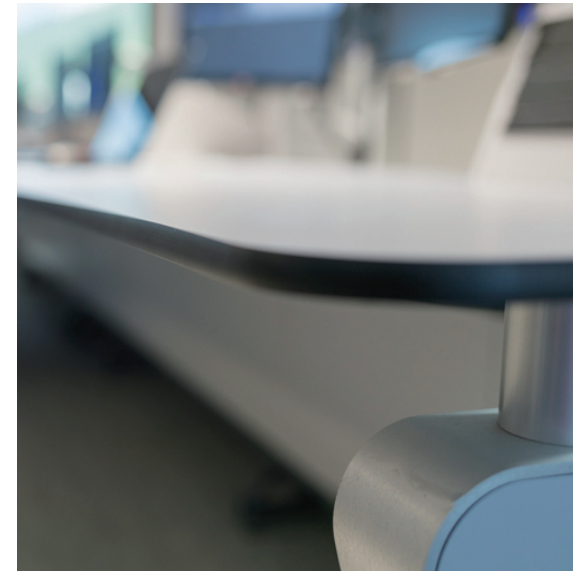


TEAM:MEDIA is very satisfied with the level of professional approach and customer care experienced during the cooperation with LundHalsey.

From the day 1 Mingle showed high interest in our project and understood our request and that was the key thing pushing our decision.

We are very happy that we have decided to cooperate with Mingle and that their furniture is in our MCR.

If there will be more need for similar solutions we will definitely look for them with Mingle, and yes we will and already did recommend them!







"THE QUALITY OF THE DESIGNS AS WELL AS THE FINISHED PRODUCTS NOT ONLY MET ALL TECHNICAL REQUIREMENTS AND ATTENDED TO A KEEN EYE FOR AESTHETICS AND WORKPLACE ORGANISATION, BUT ALSO CLEARLY INCORPORATED MEDIACORP'S OBJECTIVE TO PROVIDE ITS STAFF PHYSICAL WORK SPACES THAT HELP PROMOTE SYNERGIES..."







"I Would Not Hesitate In Choosing Lundhalsey For Future Projects. The Design, Quality And Flexibility Of Our New Desks, Combined With The Excellent Customer Service Of Lundhalsey, Are Some Reasons To Why I Would Definitely Recommend Them To Everyone Who Is Looking For New Control And Monitoring Surfaces."



# THANK YOU

